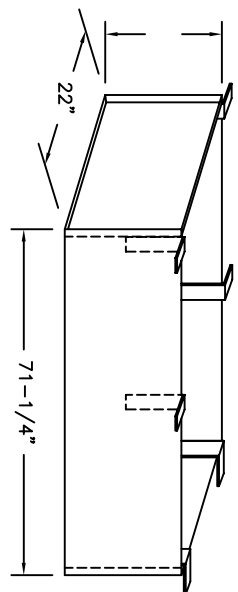


# SUPER SIMPLEX DISAPPEARING STAIRWAY WITH DEEP BOX FRAME

(USE THIS DRAWING FOR CEILING HEIGHTS FROM 12'-1" TO 13' -6")

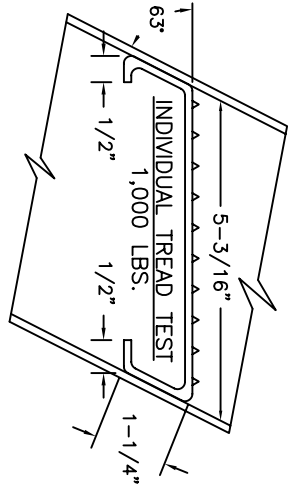
ONE INCH FLANGE  
ALL AROUND  
TOP & BOTTOM



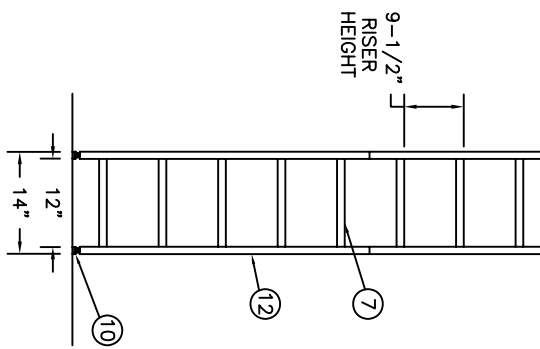
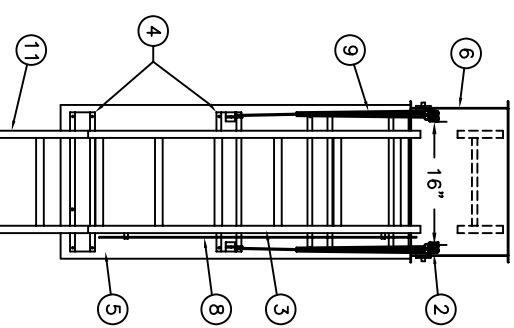
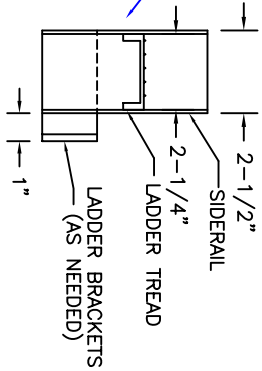
22-1/2" x 72" ROUGH OPENING  
IN CEILING (AND FLOOR ABOVE)

### SPECIAL DEEP BOX FRAME

1/8" STEEL, TO CONTAIN ALUMINUM SUPER SIMPLEX FOLDING STAIRWAY CUT FOR EXACT FINISHED CEILING HEIGHT. THIS FRAME, WITH FACTORY INSTALLED BUILT-IN TREADS, PROVIDES STEPS FROM THE DROPPED-CEILING LINE TO THE UPPER FLOOR.



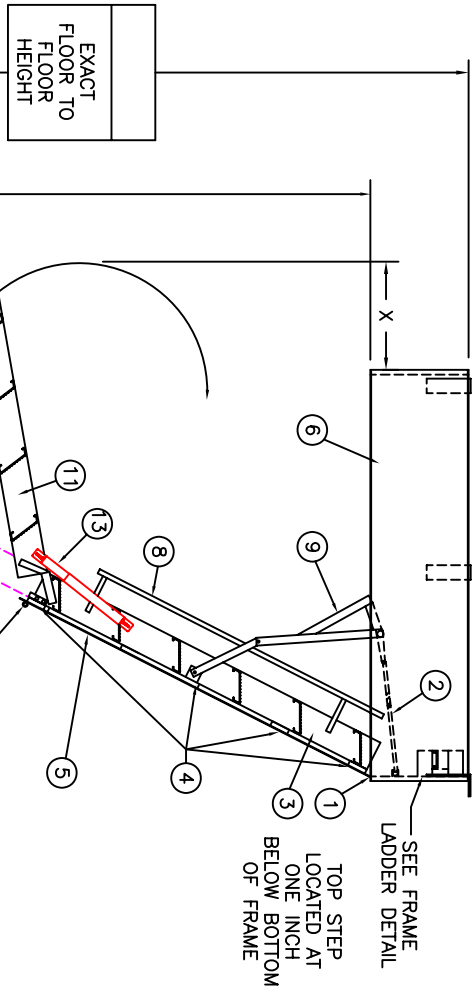
### FRAME LADDER DETAIL



### OPTIONS

- 2 HOUR FIRE RATED ASSEMBLY
- LOCK ON DOOR PANEL

NOT TO SCALE



BOTH MEASUREMENTS ARE REQUIRED FOR FABRICATION

EXACT FLOOR TO FLOOR TO HEIGHT

EXACT FINISHED CEILING HEIGHT

CEILING HEIGHT	X
(CLEARANCE)	30"

### LADDER LEGEND

1. STEEL PLANO DOOR HINGE
2. DOUBLE SPRING ACTION
3. SIDE RUNNER 5" ALUM.
4. BATTEN 1/8" ALUM.
5. DOOR PANEL 1/8" ALUM.
6. STEEL BOX FRAME
7. TREAD (SERRATED ALUM.)
8. HANDRAIL BOTH SIDES
9. EXTRA HEAVY OPERATING ARM
10. ADJUSTABLE FOOT
11. MIDDLE SECTION
12. BOTTOM SECTION
13. FOLD-ASSIST

LOAD RATING - 500 LBS.

**Precision Ladders, LLC**  
P.O. Box 2279, Morristown, TN 37816-2279  
Ph: (423) 586-2265 Fax: (423) 586-2091  
www.Precisionladders.com

DWG. CHECK	ARCHT. OR ENGR.	PROJECT	PRECISION REP
BUILT BY:	PURCHASE ORDER	WORK ORDER	SERIAL #
CHECKED BY:	DRAWN BY:	DATE	QTY.
	JBR	7/27/09	
		MODEL #	
		SS/AL-	
			S-162-BD-22.5