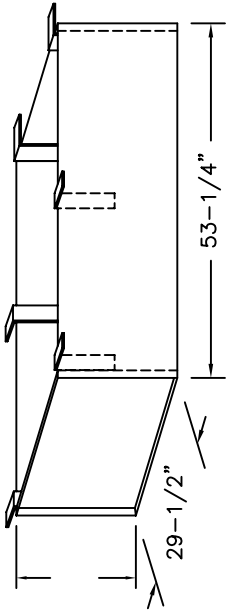


ONE INCH FLANGE
ALL AROUND
TOP & BOTTOM

SUPER SIMPLEX DISAPPEARING STAIRWAY WITH DEEP BOX FRAME

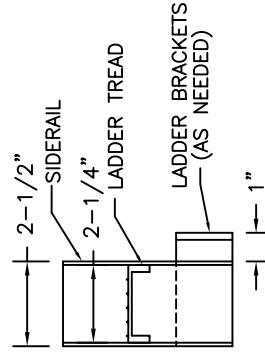
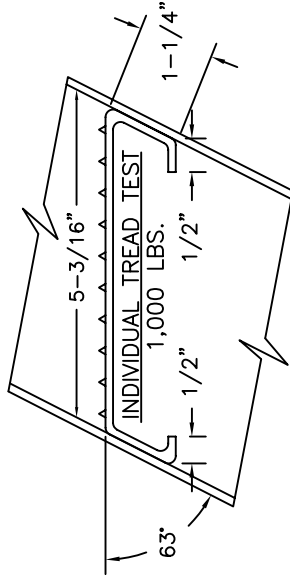
(USE THIS DRAWING FOR CEILING HEIGHTS 9'-9" OR LESS)



30" x 54" REQUIRED
ROUGH OPENING IN CEILING

SPECIAL DEEP BOX FRAME

1/8" STEEL, TO CONTAIN ALUMINUM SUPER SIMPLEX FOLDING STAIRWAY CUT FOR EXACT FINISHED CEILING HEIGHT. THIS FRAME, WITH FACTORY INSTALLED BUILT-IN TREADS, PROVIDES STEPS FROM THE DROPPED-CEILING LINE TO THE UPPER FLOOR.



FRAME LADDER DETAIL

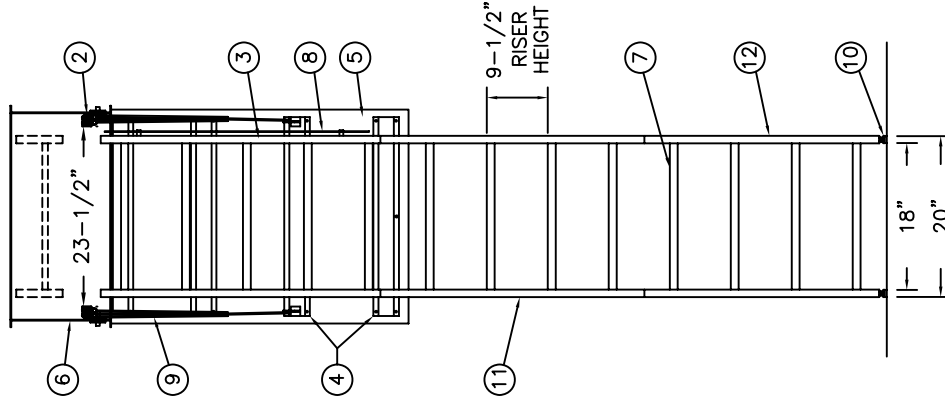
NOTES

IF FLOOR ABOVE IS MORE THAN 12" ABOVE CEILING LINE, 63 DEGREE ANGLE FRAME IS RECOMMENDED.

DIMENSIONS ON THIS DRAWING PERTAIN ONLY TO CEILING HEIGHTS 9'-9" OR LESS.

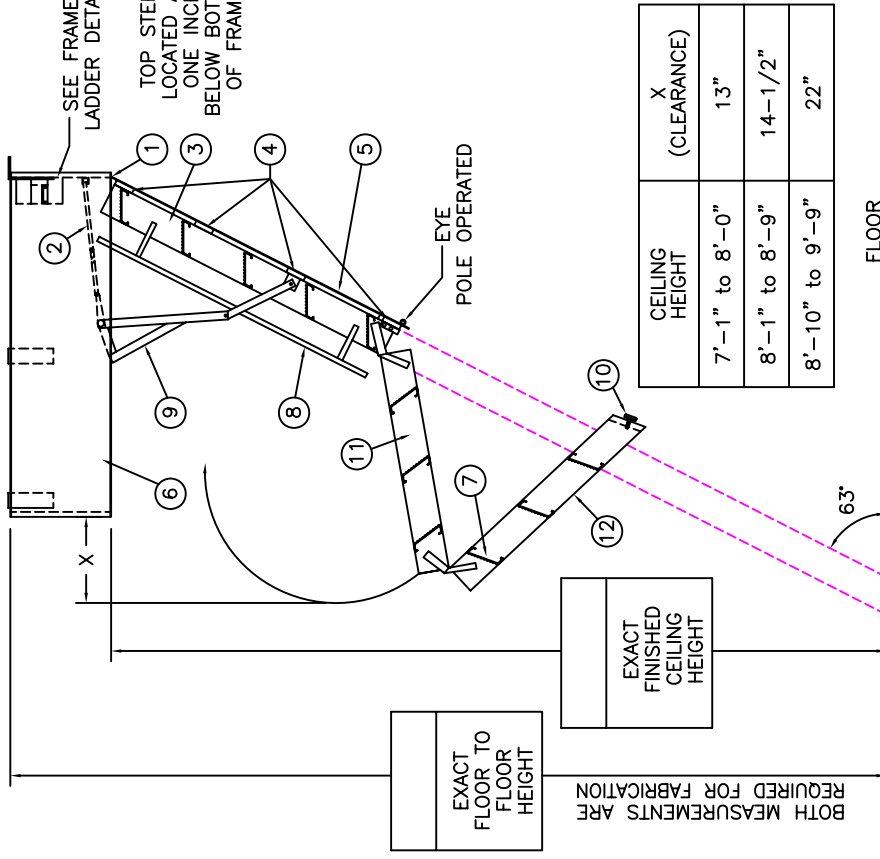
SHIPS COMPLETELY ASSEMBLED AS ONE UNIT

NOT TO SCALE



OPTIONS

- 2 HOUR FIRE RATED ASSEMBLY
- LOCK ON DOOR PANEL
- FOLD ASSIST



EXACT FLOOR TO FLOOR HEIGHT

EXACT FINISHED CEILING HEIGHT

BOTH MEASUREMENTS ARE REQUIRED FOR FABRICATION

CEILING HEIGHT	X (CLEARANCE)
7'-1" to 8'-0"	13"
8'-1" to 8'-9"	14-1/2"
8'-10" to 9'-9"	22"

LOAD RATING -- 500 LBS.

LADDER LEGEND

1. STEEL PIANO DOOR HINGE
2. DOUBLE SPRING ACTION
3. SIDE RUNNER 5" ALUM.
4. BATTEN 1/8" ALUM.
5. DOOR PANEL 1/8" ALUM.
6. STEEL BOX FRAME
7. TREAD (SERRATED ALUM.)
8. HANDRAIL RIGHT SIDE ONLY
9. EXTRA HEAVY OPERATING ARM
10. ADJUSTABLE FOOT
11. MIDDLE SECTION
12. BOTTOM SECTION

DWG. CHECK

BUILT BY:

CHECKED BY:

ARCHT OR ENGR.

PURCHASE ORDER

DRAWN BY:

PROJECT

REVISION

DATE

PRECISION REP

SERIAL#

QTY.

PURCHASER

MODEL#

SS/AL-

S-117-BD-30

Precision Ladders, LLC
P.O. Box 2279 Morristown, TN 37816-2279
Ph: (423) 586-2265 Fax: (423) 586-2091
www.PrecisionLadders.com