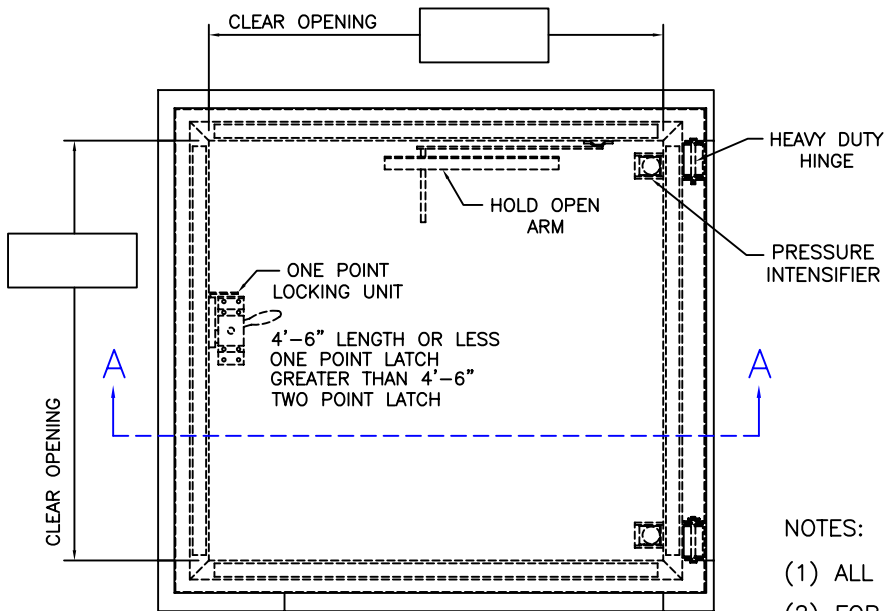
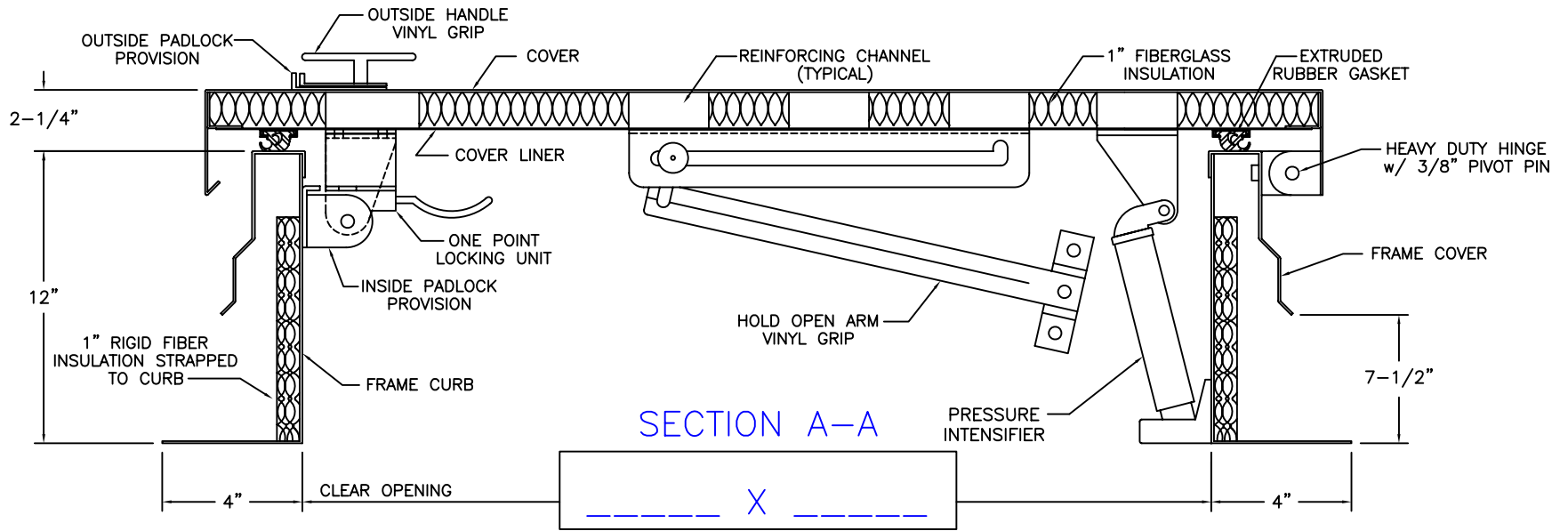


PRECISION LADDERS ROOF HATCH



SELECT HATCH MATERIAL: (IF LEFT BLANK GALV STEEL IS DEFALT)

- GALVANIZED STEEL (PRIME PAINTED)
COVER - 14 GA. GALV STEEL
FRAME COVER - 14 GA. GALV STEEL
FRAME CURB - 14 GA. GALV STEEL
COVER LINER - 22 GA. GALV STEEL
- OR
- ALUMINUM (MILL FINISH)
COVER - 11 GA. ALUMINUM
FRAME COVER - 11 GA. ALUMINUM
FRAME CURB - 11 GA. ALUMINUM
COVER LINER - 18 GA. ALUMINUM

TYPICAL OPTIONS:

- 1-1/2" CURB INSULATION
- DOUBLE WALL CURB
- STAINLESS STEEL HARDWARE

NOTES:

- (1) ALL MOUNTING HARDWARE TO BE SUPPLIED BY OTHERS.
- (2) FOR OPERATING EFFICIENCY, HATCH HARDWARE VARIES BY SIZE.

**APPROVED FOR
FABRICATION:**

(AUTHORIZED SIGNATURE)

(REQUESTED SHIP DATE)

**FACTORY FINISH
GALV - PRIME PAINTED
ALUM - MILL FINISH**

PH

EXAMPLE MODEL#: PH- A/G OPENING SIZE IN FEET-INCHES (PH-G2630)

NOT TO SCALE

Precision Ladders, LLC
 P.O. Box 2279 Morristown, TN 37816-2279
 Ph: (423) 586-2265 Fax: (423) 586-2091
www.PrecisionLadders.com

DWG. CHECK	ARCH'T OR ENG'R.	PROJECT		PRECISION REP
BUILT BY:	PURCHASE ORDER	REVISION	PURCHASER	SERIAL#
CHECKED BY:	DRAWN BY: JBR	DATE 12/23/09	MODEL# PH-	QTY. 1